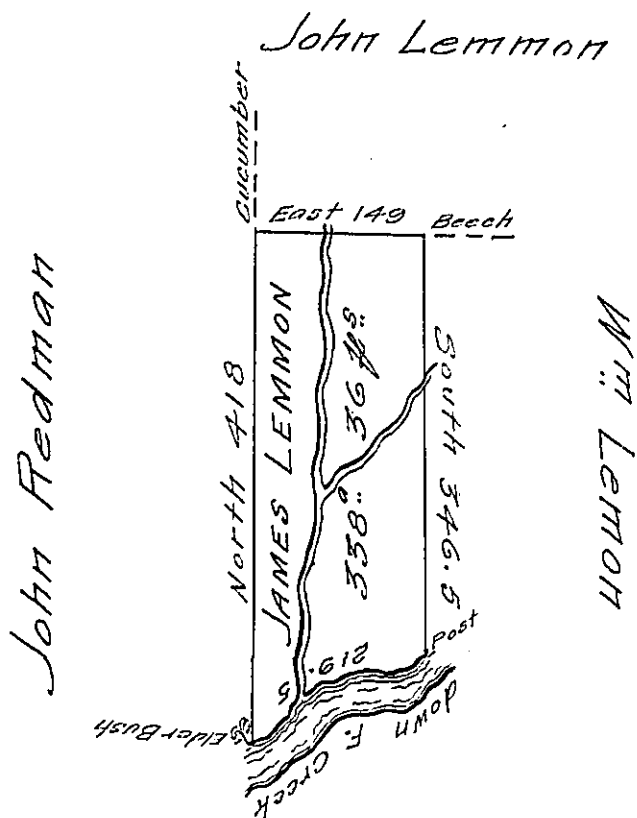


River Courses

- S 71 W 3.5
 - S 11 W 22
 - S 61 W 19
 - N 63 W 14
 - N 81 W 31
 - S 82½ W 36
 - N 27 W 10.
 - S 8 W 46
 - S 69 W 38
- # 219.5



Situate on the west side of and Ad-joining French Creek in All. County Con-taining 338 Acres 36 #s and allowance of Six # Cent for Roads &c Surveyd the 29th Day of October 1795 In pursuance of His Improvement Dated 12th June 1795.

W^m Power D^y. Sr.

*To Danl. Brodhead Esq. }
Surveyor General }*

IN TESTIMONY that the above is a copy of the original remaining on file in the Department of Internal Affairs of Pennsylvania, made conformably to an Act of Assembly approved the 16th day of February, 1833, I have hereunto set my Hand and caused the Seal of said Department to be affixed at Harrisburg, this twenty-ninth day of September 1906

Isaac R. Brown
Secretary of Internal Affairs